

## ERBB2

**Catalog Number:** 26127

**Gene Symbol:** ERBB2/HER2/Neu/c-Neu

**Description:** Anti-ERBB2 Mouse Monoclonal Antibody

**Background:** The HER-2/neu oncogene, a member of the epidermal growth factor receptor or erb-B gene-like family, encodes a transmembrane tyrosine kinase receptor that mediates extracellular signals activated by epidermal growth factors. Her2 abnormal has been strongly associated with many malignant tumors, especially with breast cancers. The expression level of Her2 is an important criterion in clinic evaluating of the progression of breast cancer.

**Immunogen:** A synthetic peptide from the C-terminal region of ERBB2, human origin.

**Tested Applications:** ELISA, WB, IHC

**Recommended Dilutions:**

ELISA: 1:1000-1:5000

WB: 1:1000-1:2000

IHC: 1:50-1:200

**Concentration:** 1mg/ml

**Host:** Mouse

**Clonality:** Monoclonal

**Purity:** Purified from ascites

**Format:** Liquid

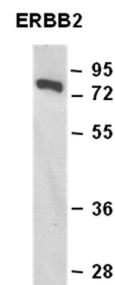
**Preservative:** No

**Constituents:** PBS (without  $Mg^{2+}$  and  $Ca^{2+}$ ), pH 7.4, 150 mM NaCl and 50% glycerol

**Species Reactivity:** Recognizes Erb-B2 of vertebrates.

**Storage Conditions:** Store at  $-20^{\circ}C$ . Avoid freeze / thaw cycles

### Western blot:



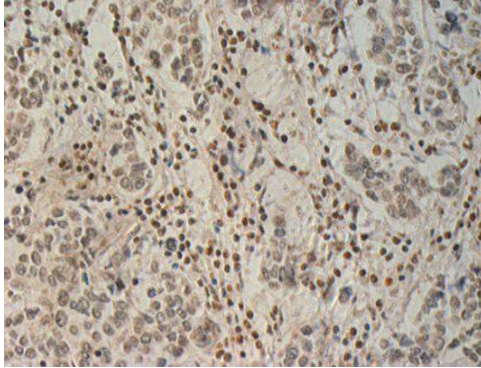
WB: Anti-ERBB2 mAb

### Western blot analysis of recombinant Erb-B2 protein.

Purified His-tagged Erb-B2 protein (Cat. # 10208) was blotted with anti-Erb-B2 monoclonal antibody (Cat. # 26127).

FOR RESEARCH USE ONLY. NOT FOR DIAGNOSTIC APPLICATIONS

## Immunohistochemistry:



**Immunohistochemical analysis of paraffin-embedded human breast cancer tissue with anti-Erb-B2 monoclonal antibody (Cat. # 26127).**

Tissue samples were fixed with formaldehyde and blocked with 1% serum for 15 min at 37 °C.

Antigen retrieval was by heat mediation in citrate buffer (pH6). Samples were then incubated with primary antibody (1:50 dilution) overnight at 4°C. HRP-conjugated Goat anti-mouse IgG (1:50 dilution) was used as secondary antibody.

---

**FOR RESEARCH USE ONLY. NOT FOR DIAGNOSTIC APPLICATIONS**